

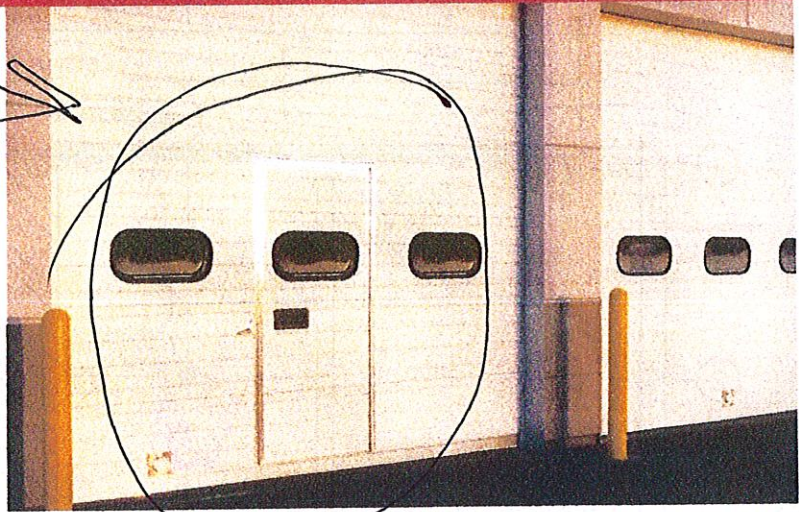
Item Description	Change Communication:	General Contractor			
		CO Status:	Value:	Approval Status:	Comment:
Change in radiant heating	Addendum #3	Submitted 11/15	\$ (7,500.00)		COR 3
Polished floor to Green/Ice	Open	Submitted 11/15	\$ (44,818.00)		
Temp 2" Water Connection	KL Coordination 10/6	Submitted 11/15	\$ 2,059.00		COR 6
Existing Tank Removal and New Septic Tie-In	Onsite Directive JM 9/15	Submitted 11/15	\$ 8,067.00		COR 4
Removal of Bridge Crane Footers	RFI #29	Submitted 11/15	\$ (3,000.00)		
Add man doors to OH doors Bay 1 and Bay 6.	Meeting 11/7- MK	Submitted 11/15	\$ 4,362.00		Confirmed ~4k/door
Total:		---	\$ (40,830.00)		

R=Review
P=Pending
A=Approved
E=Executed
C=Cancelled

PASS THRU DOOR

The most thermally efficient door system

With a 17.50 R-value (3.09 W/Msq) and .057 U-value (.324 Msq/W), the Thermacore® Models 592/599 are the energy-efficient door of choice for commercial use. The 592/599 also incorporate a thermal break and joint seal to prevent thermal transfer between exterior and interior door panel skins. The door is designed for the most demanding situations, including high-cycle, wind load and thermal applications. Built with the best technology in the business.



Model 592, Double Thermal Acrylic Windows, White paint finish, pass door

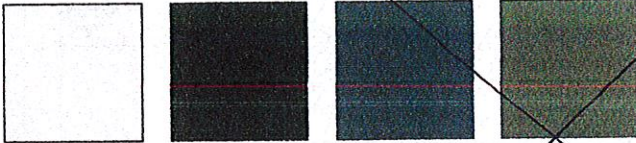
Panel options

Model 592
Ribbed, textured panel

Model 599
Flush, textured panel

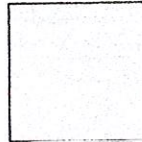
Color options

Model 592



White Industrial Brown Gray Tan

Model 599



White

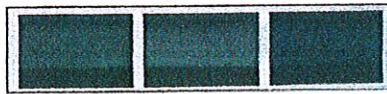
Optional: Trinar White, Trinar Beige and Trinar Brown

Actual colors may vary slightly from those shown due to fluctuations in staining or the printing process. Ask your Overhead Door™ Distributor for color samples.

Glazing options



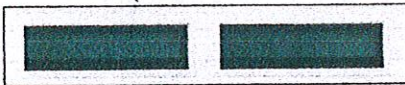
Double Thermal Acrylic (25" w by 12" h)



Aluminum Sash Section with DSB glazing

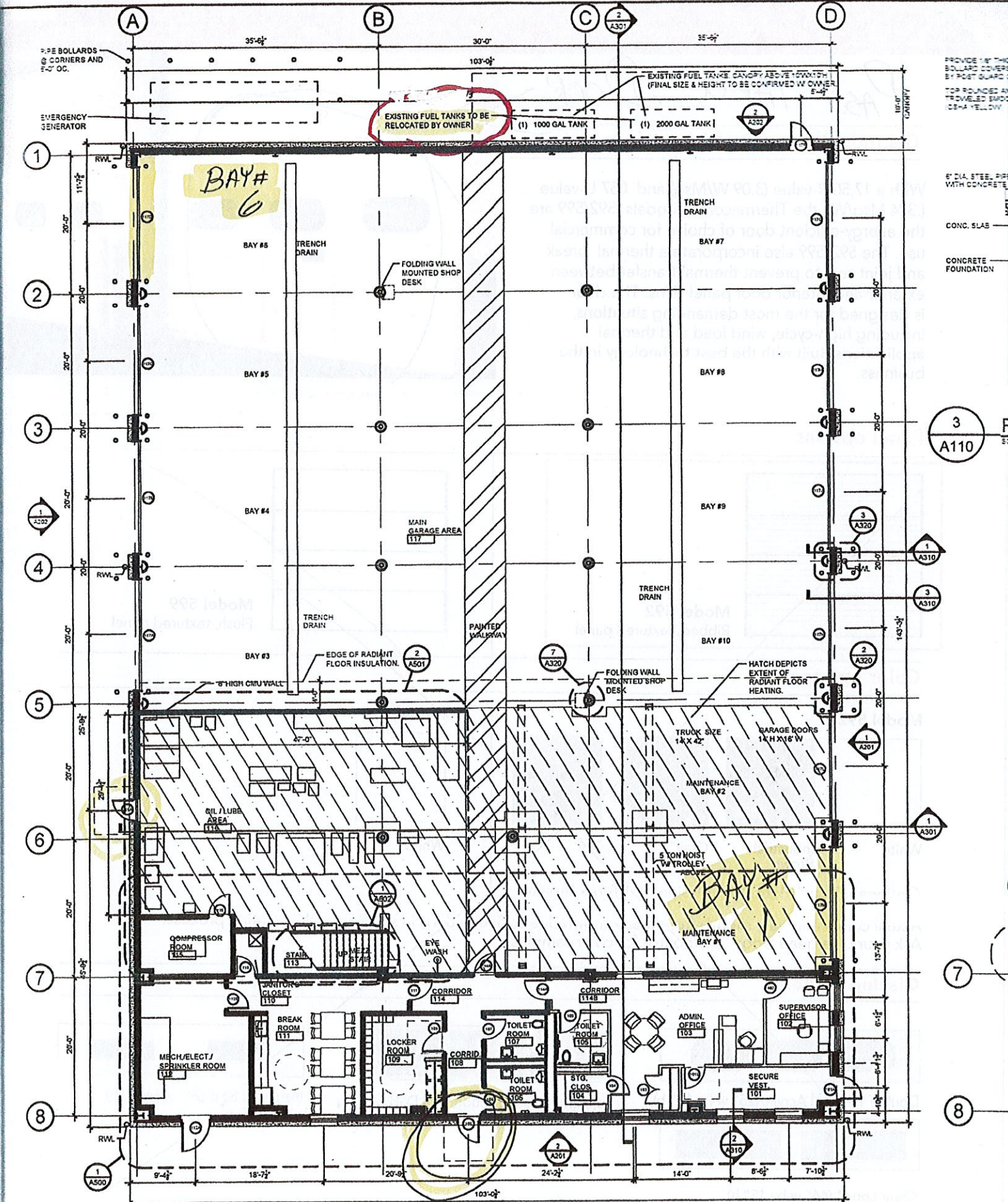


Insulated DSB (24" w by 7" h)



Clear Long* (44" w by 15" h)

*Not available on doors wider than 20'2".



1
A110 **FIRST FLOOR PLAN**
SCALE: 1/8"=1'-0"